



GAT MONTHLY MEMBERSHIP PROGRESS REPORT

Results as of: 6/30/2024

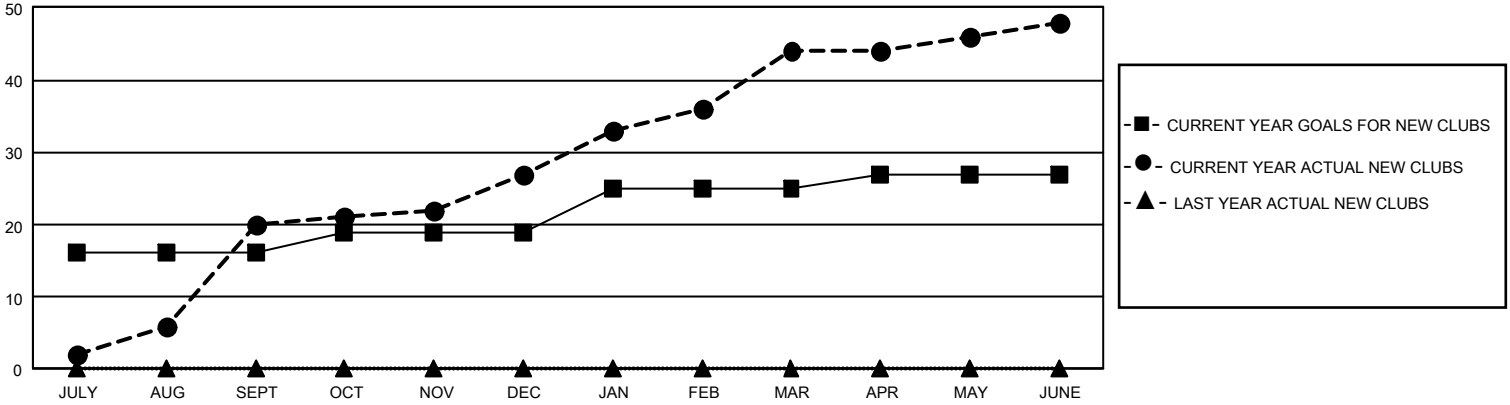
GMT Constitutional Area 5 - M, Group F

REPORT DOES NOT INCLUDE CLUBS IN UNDISTRICTED AREAS.

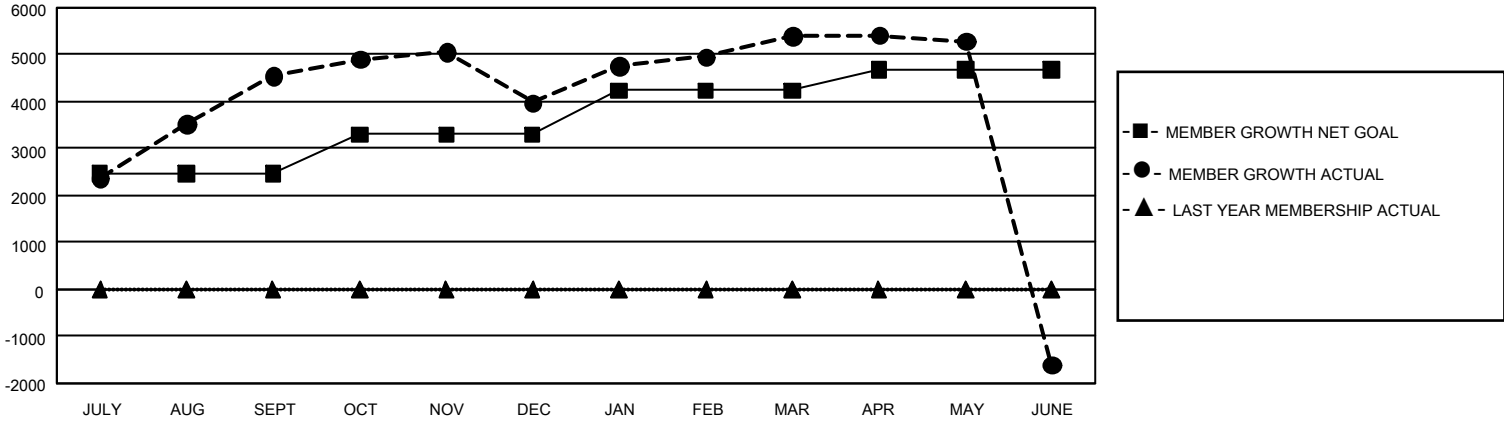
Clubs			
RESULTS FOR 2023-2024			
QUARTER	NEW CLUB GOAL	NEW CLUBS	DROPPED CLUBS
JULY/AUG/SEPT	48	20	3
OCT/NOV/DEC	9	7	5
JAN/FEB/MAR	18	17	1
APR/MAY/JUNE	6	4	14

Members			
RESULTS FOR 2023-2024			
QUARTER	MEMBER GROWTH NET GOAL	MEMBER GROWTH ACTUAL	DROPPED MEMBERS ACTUAL (including transfers)
JULY/AUG/SEPT	2466	5,933	872
OCT/NOV/DEC	836	1,097	1,577
JAN/FEB/MAR	938	1,753	226
APR/MAY/JUNE	430	524	7,385

GOALS AND ACTUAL NEW CLUBS CUMULATIVE



GOALS AND ACTUAL MEMBERS CUMULATIVE



DROPPED CLUBS: 23	1,099 CLUBS OF 1,224 ADDED 1 OR MORE NEW MEMBERS	GENDER DISTRIBUTION	
	DROPPED MEMBERS	MALE 26,631 (67.79%) FEMALE 12,640 (32.18%) NON BINARY 0 (0.00%) PREFER NOT TO ANSWER 13 (0.03%)	TOTAL FAMILY UNIT MEMBERS 2,915 FAMILY MEMBERS PAYING HALF DUES 1,770
DECEASED 117 CLUB CANCELLED 84 OTHER 9,852 TOTAL 10,053	CLICK HERE FOR CUMULATIVE MEMBERSHIP DATA		